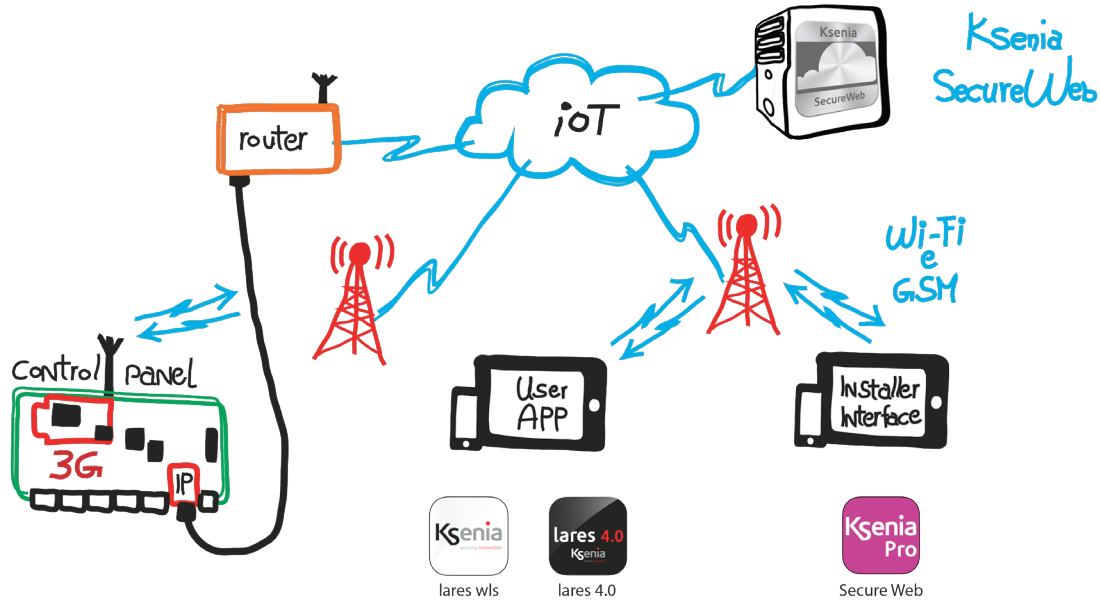




**Ksenia**  
security innovation

# ALWAYS CONNECTED



**3G** back-up of **IP-LAN**  
and vice versa.

Photograph the Qr-code  
to see the video  
Ksenia SecureWeb



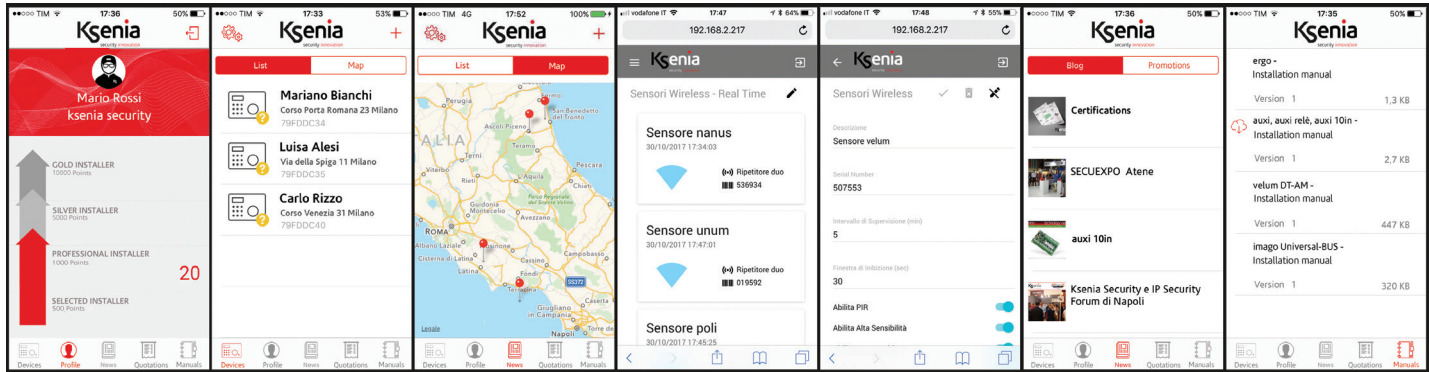


## MOBILE REVOLUTION: THE KSENIA SECURITY NEW WAY OF PROGRAMMING AND MANAGING ITS SYSTEMS FROM ANY MOBILE TERMINALS

All Ksenia Platforms represent an important Technological Innovation for enabling the configuration and management by means of Ksenia SecureWeb, on top of the traditional modes via PC.

Ksenia SecureWeb is a cloud-based Server available on AWS allowing the development of complex applications enhancing their flexibility, scalability and reliability. Ksenia SecureWeb is therefore able to offer a superior Data Elaboration Capacity, Data Base Storage, different Contents and other functions to support the growing different End-User's and Installer's expectations. All this by offering the highest Security Level and Privacy, encrypting the Network and providing a DRP (Disaster Recovery Plan), thus verifiable in the world of Interbank Services as well as Intelligence Services of most important Governments.



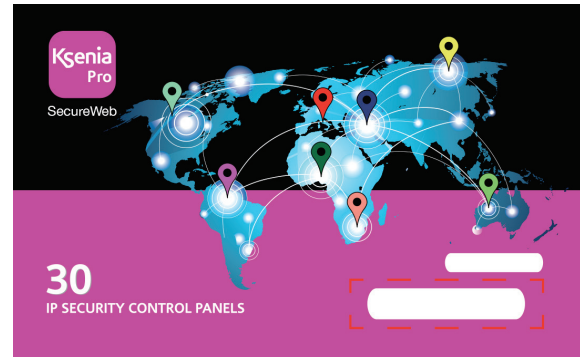
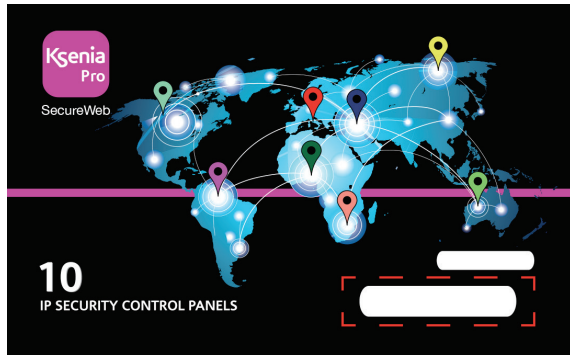


The IoT (Internet-of-Things) Platforms represent a significant advancement in their Value Proposition also thanks to the Ksenia SecureWeb.

Ksenia SecureWeb, in fact, offers to the Installer a single dedicated APP named KSENIA PRO, which allows the Control Panel Configuration from any mobile terminal, smart-phone included, simply by scanning the Control Panel QR-code.

Furthermore, with this fantastic Tool, the Installer has the possibility to receive all the Technical Release, Marketing News, Reserved Commercial information and any variation applied to the Installer Manuals.

The **Ksenia Pro APP** allows also the possibility to centralize, to geo-localize and to receive all sort of Push Notifications from an unlimited amount of Systems already installed. Up to 3 installations (with lares 4.0 or lares wls Control Panels) they can be freely centralized, for an higher number of Control Panels the Installers is requiring to utilize a license available in the form of a 'scratch card' respectively for 10 or 30 additional Panels.



The "text-to- speech" of Loquendo (Nuance Comm.) is now available as a License and also assuming the form of "scratch-card" where it's possible to choose the voice (male and female) and language desired among the 38 different Languages currently existing.

**Ksenia**  
security innovation



[www.kseniasecurity.com](http://www.kseniasecurity.com)

# INDUSTRY 4.0: MOBILE REVOLUTION

# lares 4.0

The most innovative **IoT** Solution  
for Security and  
Home & Building Automation



Compliant EN 50131- GRADE 3 - class II

**lares 4.0**





# lares 4.0

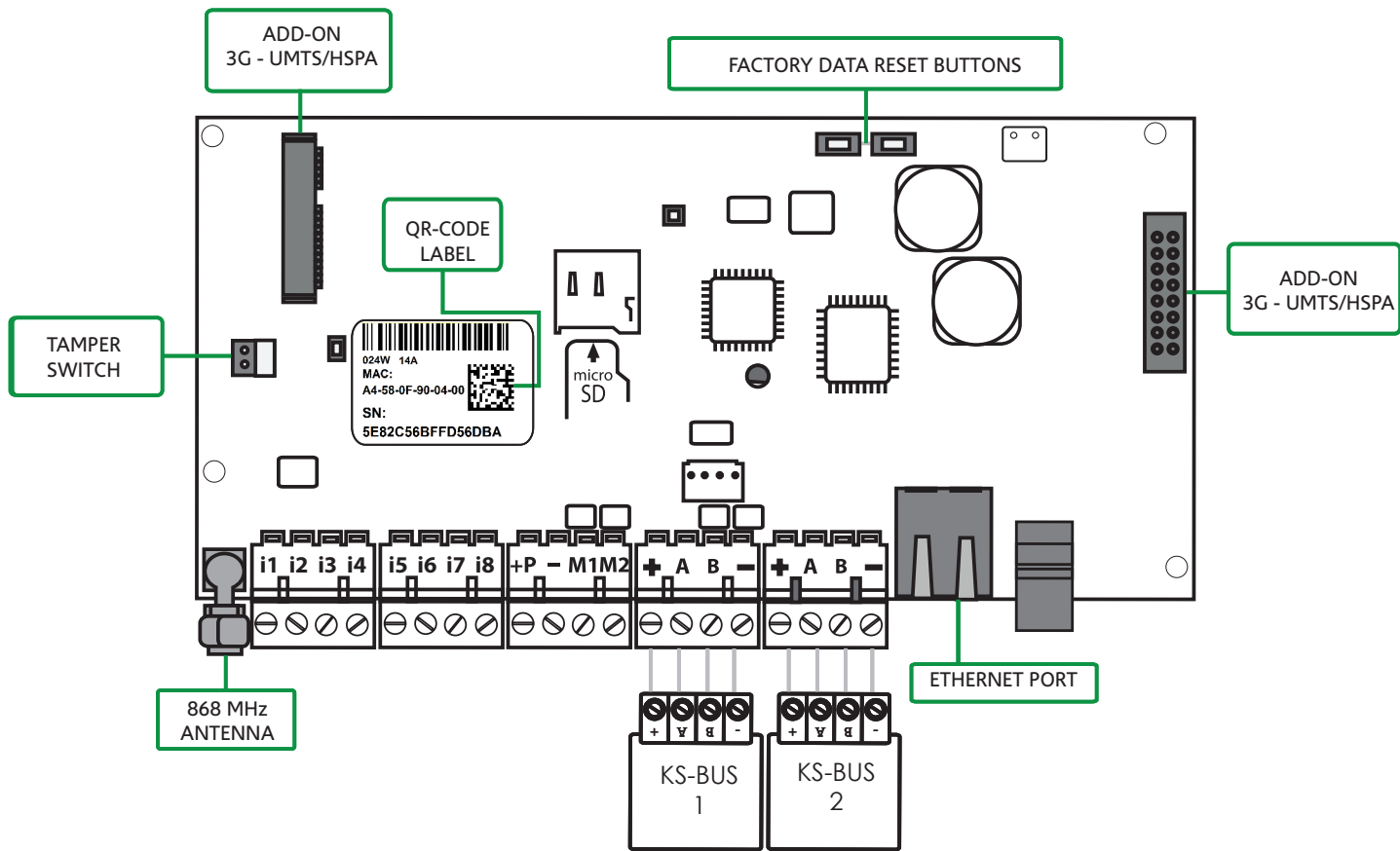
The new lares 4.0 represent by far the most advanced and reliable Solution in the Digital Revolution (IoT) for what concern both the Security (Intrusion, Video-surveillance, Access Control) and the Home & Building Automation. They can manage a number of outputs equal to the number of inputs (sensors) in order to manage lights, clima, irrigation, Automatic Doors and Windows, in short any type of Automation or Appliances: on top of all Security aspects mentioned before, even the SMART HOME or SMART BUILDING Features can be now managed by a single User APP (lares 4.0) and programmed from the Installer now even from any mobile terminal (APP named Ksenia Pro).

Regardless from its dimension, the Control Panel Mother Board is having a native Ethernet Port as well as the on board Wireless Transceiver (868 MHz Bi-directional) compatible with all existing wireless Ksenia's Peripherals; The Control Panels are also equipped with a Double BUS and detachable Connectors.

All Mother Boards are designed to take directly onboard (with no need of having a Communication Bus so as to enhance the transit speed of all Data) both the 3G Module (and soon the 4G-LTE) and, where required, the PSTN Module. In any case is guaranteed the transmission of Voice Messages, email, Contact ID and SIA DC-09 Level III Protocol to the CMS (Central Monitoring Stations). The Installer APP enables also the Centralization and Geo-localization of all Panels installed and therefore to offer the outmost in terms of Maintenance & Service by means of Push Notifications even for tech. Alerts (valid for all IoT Panels: lares 4.0 and lares wls).

*The lares 4.0 Platform has been developed and manufactured with unprecedented characteristics of power, calculation speed and capacity of memory calculation (even compared to the traditional lares, already superior to many competitors) as specified in the table below:*

	lares	lares wls	lares 4.0
Flash memory (space code)	512 KB	2 MB	4 MB
RAM	96 KB	512 KB	512 KB
CPU Clock	80 MHz	120 MHz	240 MHz
Drystone MIPS (Mln. Instr. per sec.)	132	240	480
NAND data memory	8 MB	16 MB	32 MB
NOR data memory (eMMC)	-	4 GB	4 GB
SD card slot	no	yes	yes



## MAIN FEATURES lares 4.0

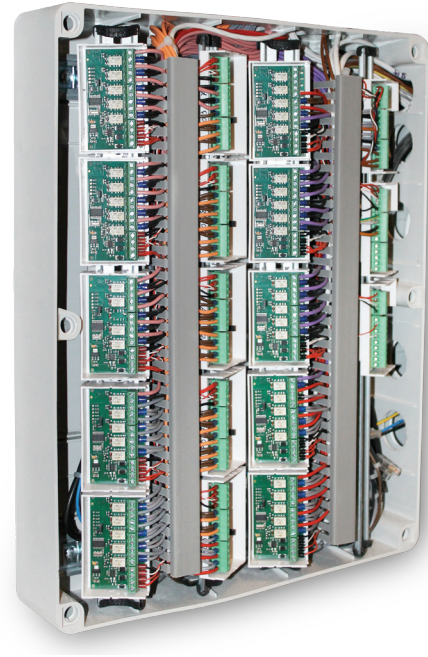
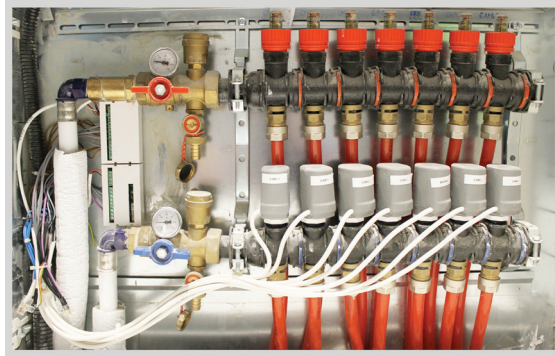
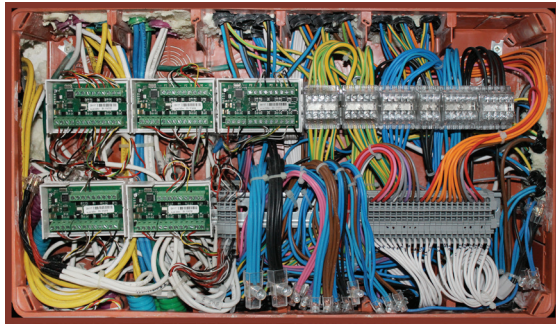
	lares 4.0 - 40		lares 4.0 - 40 wls		lares 4.0 - 140 wls		lares 4.0 - 644 wls	
Number of zones (of which radio)	40	(40)	40	(40)	140	(64)	644	(64)
Number of outputs (of which radio)	40	(40)	40	(40)	140	(128)	644	(128)
Number of arming modes	32		32		64		128	
#Hashtag number	12		12		20		64	
Number of partitions	12		12		20		30	
Programmable inputs/outputs on board	2		2		2		2	
Inputs on board	8		8		8		8	
868MHz radio interface	/		●		●		●	
On board BUS	1		2		2		2	
User Interfaces ( <b>ergo</b> keyboards, <b>ergo S</b> , <b>ergo M</b> , <b>volò</b> , <b>volò in</b> )	24		24		40		64	
Wireless sensors ( <b>poli</b> , <b>nanus</b> , <b>unum</b> , <b>velum</b> , <b>nebula</b> )	40		40		64		64	
Number of manageable users	64		128		512		1024	
Number of stored events	1.500		5.000		10.000		10.000	
Number of programmable scenarios	32		32		128		512	
Number of events groupings to which associate the scenarios	64		64		256		1024	

All Panel sizes are compatible with the following BUS Peripherals. User Interfaces: **ergo**, **ergo S**, **ergo M**, **volò**, **volò-in**.  
Expansion Modules: **auxi**, **auxi relè**, **auxi-10in**, **auxi-T**, **auxi-L**. Sirens: **radius BUS**, **imago BUS**. Other Peripherals: **opis**, **divide**, **duo BUS**.

All Panel sizes are compatible with the following wireless Peripherals.  
Sensors: **poli**, **nanus**, **unum**, **velum wls**, **nebula**. Sirens **imago wls**. Remoto Control **opera**. Duo Repeater. I/O **auxi wls** Module.

To endorse the Quality and Reliability of the lares 4.0, Ksenia Security offers a Warranty Extension up to 5 years.





### Case History example:

The photos are showing a residential installation with a Control Panel lares 4.0 - 140 wls. Together it encompasses 126 inputs and 96 outputs, with complete management of all lights, 8 powered window Shutters and thermoregulation of 9 independent Areas. Obviously all Security aspects have been considered adding Perimetral Barriers, Magnetic Contacts on all Accesses and several Motion Detectors on top of 4 IP Cameras.

# lares 4.0



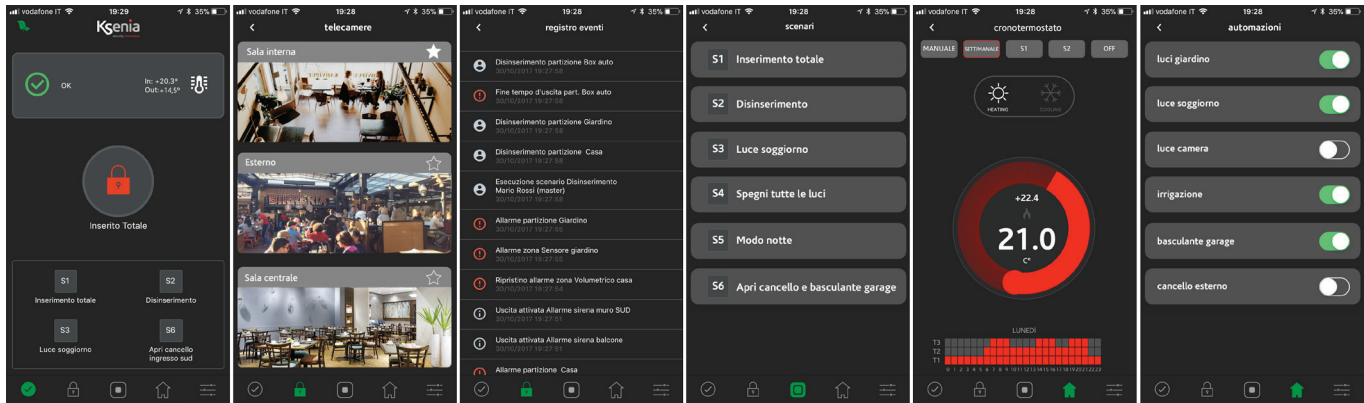
Download on the  
App Store



GET IT ON  
Google play



# lares 4.0 APP



Thanks to this new App the USER EXPERIENCE is really fantastic: very direct and easy to use, a comprehensive Home or Building Surveillance.

A single APP in fact allows to monitor all Security Aspects (Intrusion, VideoSurveillance, Access Control) and simultaneously to manage Home Automation or BMS (Building Management System).

'MAXIMUM FREEDOM and CREATIVITY': for the first time the User himself, without asking to his Installer, can not only choose but even set-up the domotic scenario he wants and manages it even from remote in the way he likes. Similarly the User can determine which kind of Push Notification he wishes to receive on his smartphones or tablet.



# ergo-T



# ergo-T and ergo-T plus



**ergo-T** as 'TOUCHSCREEN', the last generation Interface based on capacitive multi-touch with high contrast and high Resolution Display.

Often adopted in combination with the new **lares 4.0** Control Panel, the newly developed from 'ergo' Keypad series, differently to all Tablets available on the marketplace, has been specifically designed to serve as MULTIMEDIA CENTER from which to program, monitor and manage all the different functions either in terms of Security and in terms of SMART HOME - SMART BUILDING (e.g. for Automation Control, Lights, HVAC, Home Appliances, Irrigation, etcetera) in association to a unique scenario in the desired mix, in order to make our life easier wherever we are, at Home or in a large Office Building.

Aiming to interface all the above, the ideal location of 'ergo-T' is in-wall Mounting, i.e. fixed inside any DIN 503 Wall-Box or European back boxes 60mm pitch, regardless if its size is 7 inches or 10 inches (T plus), always connected and powered with PoE (Power over Ethernet).

# IoT Wireless Platform for Security & Home Automation



lares wls

The most advanced Wireless Control Panel dedicated to the Professional Market only, specifically designed for High-End Prestigious Residential Installations (like Villas or Period Homes) with advanced Smart Home requirements.

**lares wls 96-IP** offers an 868 MHz Wireless Technology fully Bi-Directional, fully encrypted and compatible with all Ksenia Security Wireless Peripherals already on the market. The maximum reliability of each Device is additionally guaranteed by the continuous Event Notification as well as the confirmation of any command received.

The communication between the Peripherals and the Panel is guaranteed through the Secure Encryption on all exchanged messages.

Complex Algorithms called DPMS (Dynamic Power Management Systems) enable the best possible communication according on the distance, reducing any interference (noise) and allowing a long battery life.

## MAIN FEATURES AND CHARACTERISTICS

The new "Self-Contained/All In One" Wireless System is enclosed in a very small Polycarbonate Box in White, Black or metallic Grey Color, containing the Mother Board with incorporated IP and Transceiver, the speaking Keypad with soft-touch (equipped with RFID Proximity Reader and Temperature Sensor), the Indoor Siren, the Switching Power Supplies 12V-1,7, protected by a pre-wired Fuse and designed to allocate a Back-up Lead Battery of 12V/ 2Ah.

The Panel is managing:

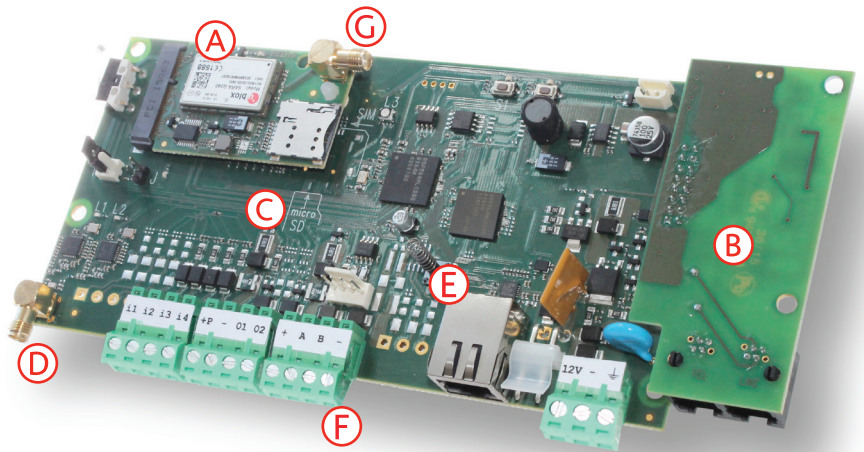
- up to 32 radio Peripherals for a max. of 96 wireless Zones  
+ 4 wired Zones on board.
- 16 wireless Outputs (with auxil wls) + 2 PGM Open Collector Outputs  
of 500mA on board.
- 4 independent Partitions



The external communication of the lares wls 96-IP Platform, on top of the IP Connection, is ensured by the add-on 3G Module(UMTS-HSPA) and/or PSTN, to be mounted directly on the CP Board. For the first time, even in absence of the IP Network or in Black-out case, it will still be possible to use the APPs both for managing and programming thanks to the GSM or 3G Channel.

Compared to the former Systems, a lot of new features are now available for what concerns the Video Surveillance and the Audio/Video Verification thanks to the transmission of a Push Notification in case of Intruder with screen-shots related to the selected events.

To endorse the Quality and Reliability of the lares wls, Ksenia Security offers a Warranty Extension up to 5 years.



- (A) 3G add-on modules (U-Blox radio module) with micro Sim
- (B) PSTN add-on module
- (C) Micro SD Slot
- (D) Radio antenna 868 MHz Interface connector
- (E) Ethernet connector
- (F) Removable terminal blocks
- (G) 3G antenna connector

Compliant EN 50131- GRADE 2 - clas II



## MAIN FEATURES lares wls

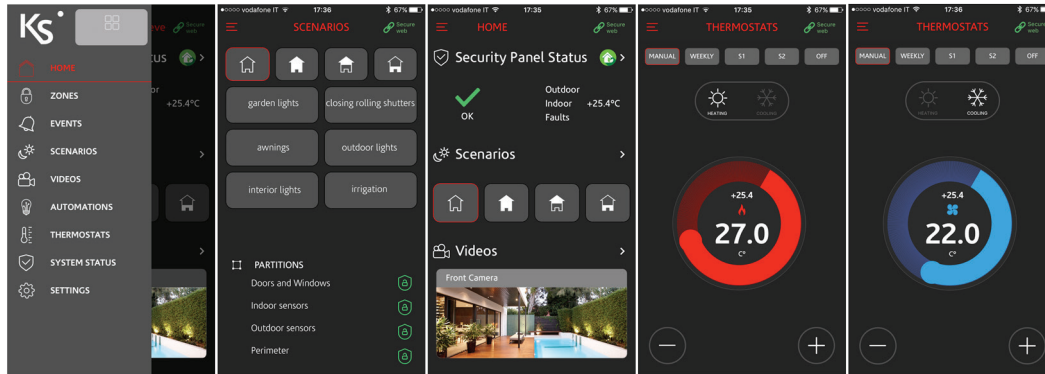
Maximum number of wireless inputs	96	Number of Users (Codes and Mini-Tags)	32+32
Maximum number of wireless outputs	16	Maximum number of Wireless Devices	
On board wired Inputs	4	• Detectors ( <b>poli, nanus, unum wls, nebula, velum wls</b> )	32
On board open collector outputs	2	• <b>imago wls</b>	3
Partitions	4	• <b>opera</b>	16
Function available with IP interface		• <b>auxi wls</b>	8
• Direct connection to <a href="http://www.kseniasecureweb.com">www.kseniasecureweb.com</a>	yes	• <b>ergo wls</b>	4
• Installer Interface via smartphone and tablet (APP)	yes	• <b>duo repeater</b>	2
• User mobile APP (iOS - Android)	yes		
• Push Notifications to end user with video frames	yes	BUS Peripherals	
		• User interface ( <b>ergo S, ergo M</b> )	1
Integrated Wireless Transceiver	yes	Integrated indoor siren	yes
Add-on GSM/3G communication module	yes	Speaking keypad	yes
Add-on PSTN communication modules	yes	Events log	
Communication ways		• Number of recorded events	640
• Voice dialer (With GSM/3G or PSTN module)/TTS	yes	Cronothermostat	1
• SMS (With GSM/3G module)	yes	Compliant EN 50131 Grade II	yes
• e-mail dialer (with GSM/3G or IP module)	yes	Stabilized switching power supply	14,2V 1,7A
• Contact ID (with GSM / 3G or PSTN module)	yes	Back-up Battery (Power)	2Ah
• SIA DC-09 (with GSM/3G or IP module)	yes	Polycarbonate Housing	yes



lares wls



# lares wls APP



Thanks to the APP “lares wls”, the End-User can manage entirely his System as well as the new functions of chronothermostat and Video-Verification from any mobile terminal with no need of having a Public IP Address or to configure a Router.



**ergo wls**



# ergo wls

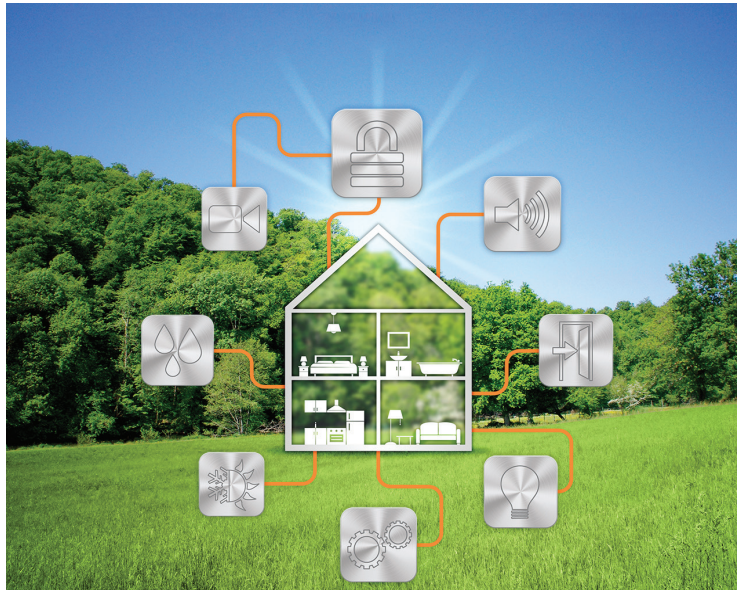


The **ergo wls** Keypad, with the same form-factor as the **ergo M**, can be located everywhere you like thanks to the most advanced 868 MHz Wireless Transmission, fully Bi-Directional and Encrypted. Complex Algorithms called DPMS (Dynamic Power Management Systems) enable the best possible Communication according on the distance reducing any interferences (noise) and allowing a long Battery life.

Additionally **ergo wls** can be used in the Transceiver Mode (if connected to the BUS), expanding the coverage of the wireless signal to give an easy access to more Peripherals. Available in White and Black, the **ergo wls** Keypad can also be recharged using its On-Wall-Docking Station also connecting the KS-BUS.



# SMART HOME BUILDING MANAGEMENT SYSTEM





**domus**

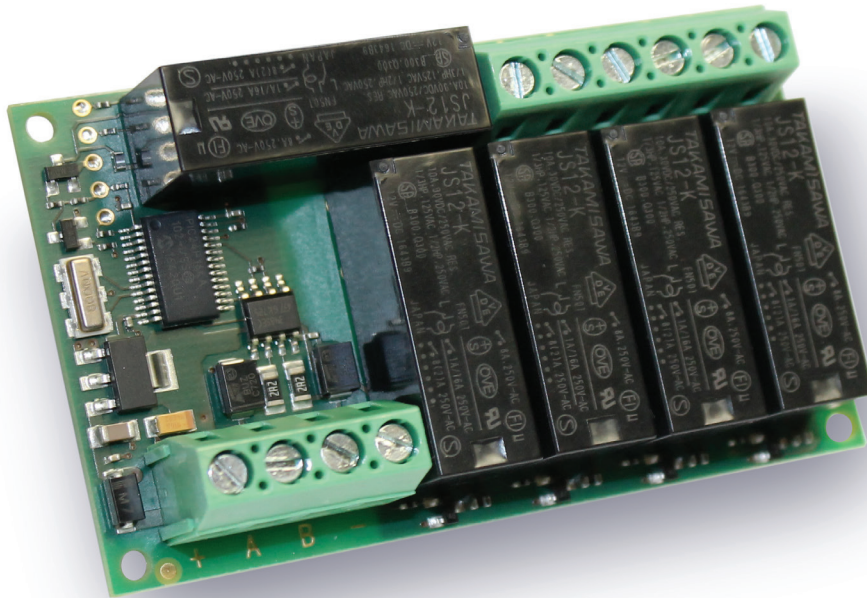
# domus

**domus** is an in-wall Module which, as the Proximity Reader called 'volo-in', takes advantage from the Keystone Opening (same size for all switches plaques), to realize a new Device which permits, for every room, to have at the same time a Motion Detector, a Temperature and Humidity Sensor and a Lux Sensor. Useful Device in any Domotic Environment, it allows in combination with the Module **auxi-L**, to switch-on and off any Light according to the inside Luminosity only when someone is inside that room (Energy Saving).

It's equipped with a Digital Temperature and Humidity Sensor (produced by the world leader Sensirion) able to allow the management of an Air Conditioning or a Dehumidifier in order to obtain the desired level of Comfort.

It becomes very useful for any office environment or for example necessary in Museums for the proper Conservation of Art-Masterpieces.

**domus** is to be connected to **lares 4.0** by means of the 4 wires Serial KS-BUS.

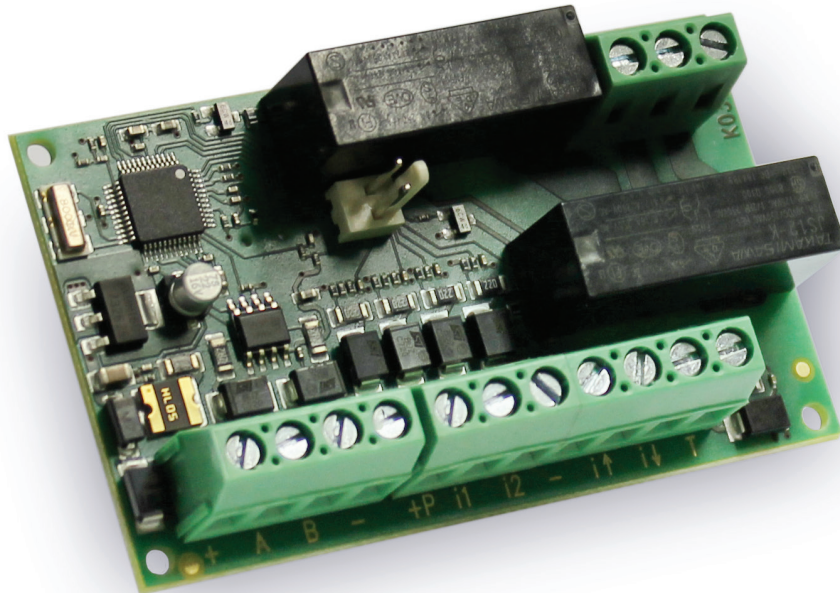


auxi-L

# auxi-L

**auxi-L** is an Expansion Module with 5 Relays outputs operating at 250V-8A (10A peak), with 1 common Terminal, ideal for Light Management and for disconnecting Appliances. As all the other Expansion Modules of Ksenia Security, it's having very compact dimensions (only 70x45mm) enabling room savings, it can be installed either inside the DIN-503 Boxes and on DIN guide reducing dramatically the installation time.

**auxi-L** is to be connected to the lares Panel and **lares 4.0** by means of the 4 wires Serial KS-BUS.



**auxi-T**



# auxi-T

**auxi-T** is a Module designed for the complete management of Windows/Doors equipped with powered Shutters. It provides 3 Zones for linking the necessary Protections of the Window (Magnetic Contact, Shutter Sensor, Inertial Sensor of Perimetral Barriers) and 2 inputs for managing the local activation buttons for the Shutter Automation. Additionally it provides 2 relays interlocked outputs (8A-250V) for controlling the Shutter motors. From the Scenarios programmed on lares 4.0, not only it will be possible to open or close entirely the Window Shutters from your APP, but also to position them in 4 different Opening Positions (2/3 Opening, Half-Opening, 1/3 Opening and only Air-Circling). With local Buttons it is possible to manage it in the normal way, but also to manage the complete Opening or Closing with a Double-Click.

As all the other Expansion Modules of Ksenia Security, it's having very compact dimensions (only 70x45mm) enabling space savings, it can be installed either inside the DIN-503 Boxes and on DIN guide reducing dramatically the installation time.

**auxi-T** is to be connected to the Panel **lares 4.0** by means of the 4 wires Serial KS-BUS.



**SMART BUILDING AUTOMATION PRO**

NETWORK



ELEVATOR



INTERCOM



POWER  
MANAGEMENT



ENERGY  
MANAGEMENT



LIGHTING



BUILDING  
MANAGEMENT

INTEGRATED  
CONTROL  
PLATFORM

PROVIDES MINIMUM 40% ENERGY SAVING



**Ksenia Security Srl**  
Strada Provinciale Valtésino  
63065 Ripatransone, AP, Italy  
tel. +39 0735 751646 / fax +39 0735 652281



**General Questions** / [info@kseniasecurity.com](mailto:info@kseniasecurity.com)  
**Commercial** / [sales@kseniasecurity.com](mailto:sales@kseniasecurity.com)  
**Technical** / [helpdesk@kseniasecurity.com](mailto:helpdesk@kseniasecurity.com)

[www.kseniasecurity.com](http://www.kseniasecurity.com)



© Copyright 2017 • All Rights Reserved

**GREEN TECHNOLOGY  
MADE IN ITALY**